

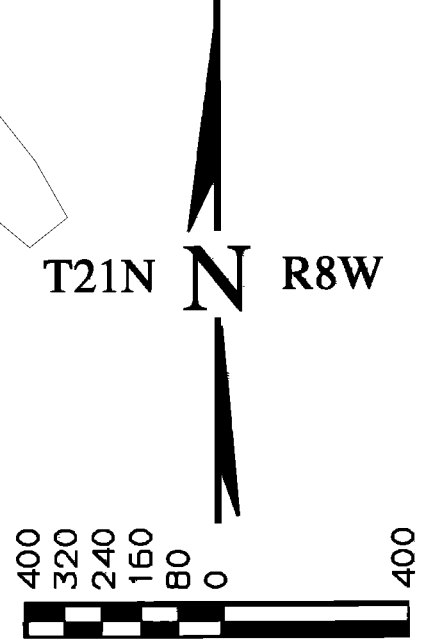
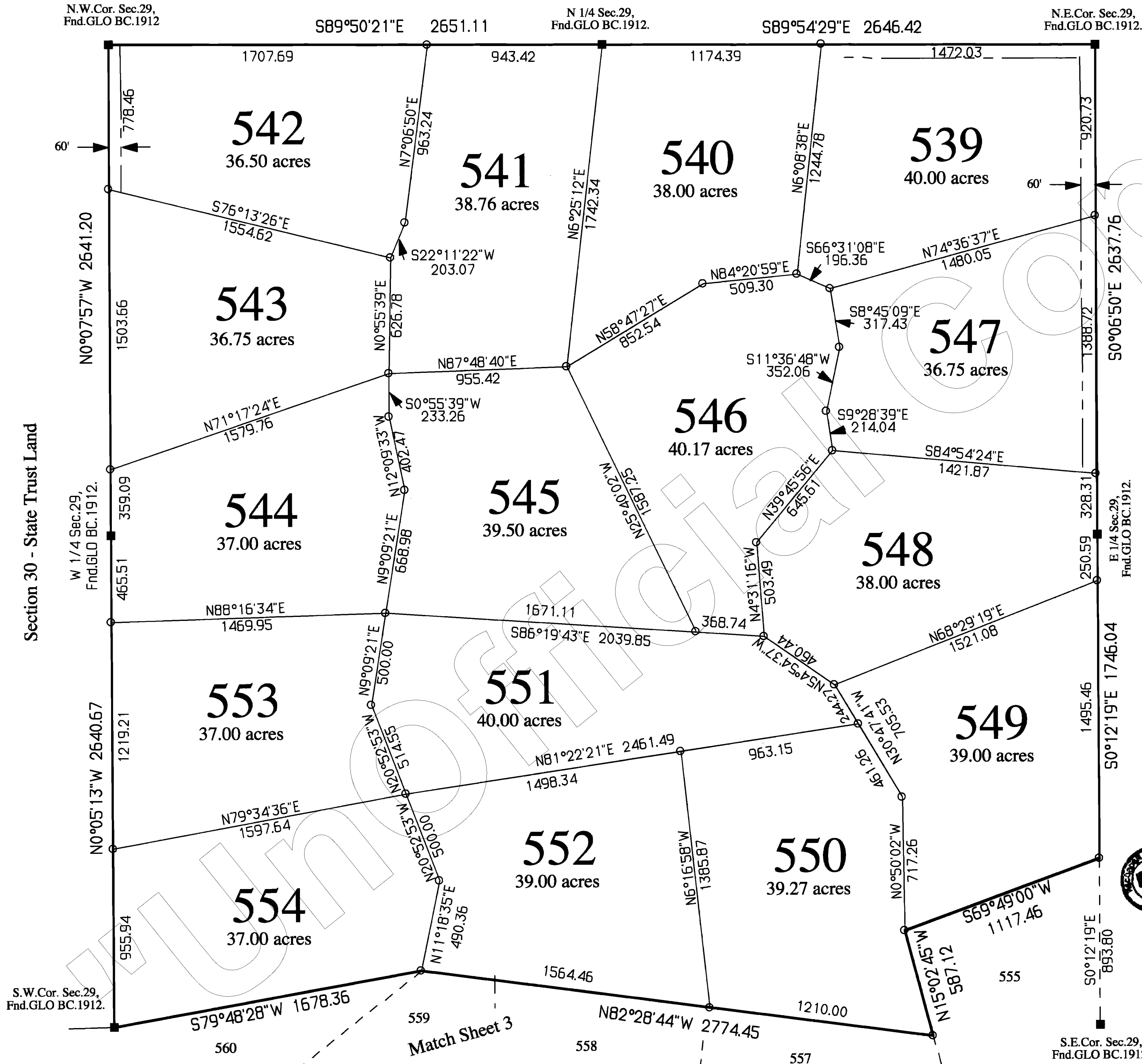
Sierra Verde Ranch - Unit XI

Part of Sections 29 & 32, T21N, R8W,
G. & S.R.B. & M., Yavapai County, Arizona.

Record of Survey
Sheet 2 of 6 Sheets

43/32 L.S.

Section 20 - State Trust Land

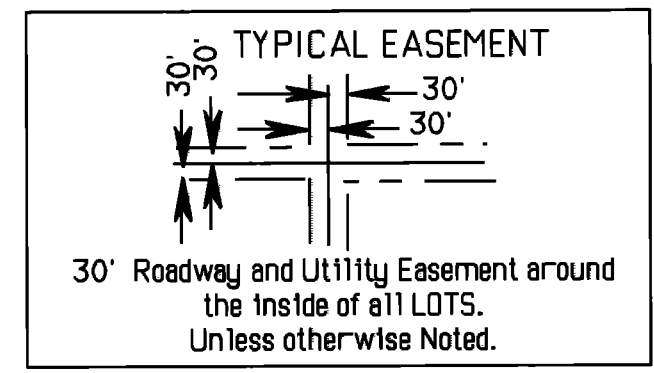


Basis of Bearing: North (WGS-84 Spheroid)
established using Trimble SSI Receivers in RTK.

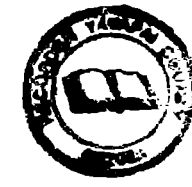
LEGEND	
---	Easement SEE NOTE
○	Set 2" A1. Cap LS 19849
■	Monument (see description)
X	Calculated Corner

NOTE:
This drawing does not reflect any RIGHTS-OF-WAY, EASEMENTS or other ENCUMBRANCES which would be revealed by a current TITLE REPORT.

NOTE:
Multipurpose Non Fencing Easement:
Easements for the purposes of Roads, Utility, Drainage, Cattle, Egress & Ingress, Horseback Riding and Hiking.
AND ARE NOT TO BE FENCED OFF.



3049372
FILED AND RECORDED AT REQUEST OF
Shaw American Title
June 17, 1998
AT 11:17 O'CLOCK P.M.
BOOK 43 of Land Surveys
PAGE 32
Yavapai County, Arizona



ANTHONY J. SMALL
County Recorder
Deputy Recorder



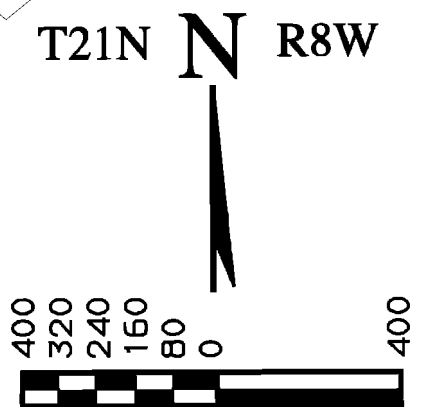
Shaw Surveying
P.O. Box 1123 - Snowflake, Az.
(520)-536-4023 June 8, 1998

Sierra Verde Ranch - Unit XI

Part of Sections 29, 31 & 32, T21N, R8W,
G. & S.R.B. & M., Yavapai County, Arizona.

Record of Survey
Sheet 3 of 6 Sheets

43/33 L.S.

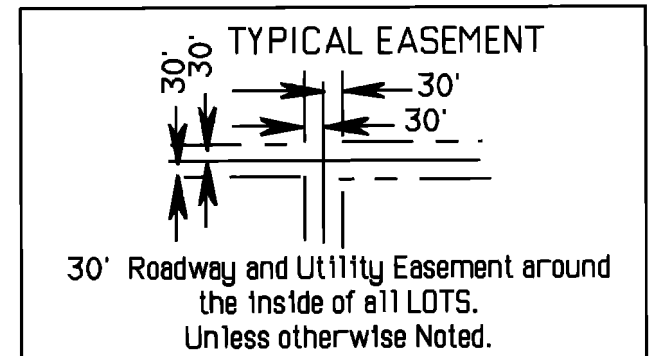


Basis of Bearing: North (WGS-84 Spheroid)
established using Trimble SSI Receivers in RTK.

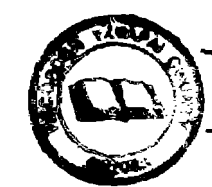
LEGEND	
-----	Easement SEE NOTE
○	Set 2" Al. Cap LS 19849
■	Monument (see description)
X	Calculated Corner

NOTE:
This drawing does not reflect any RIGHTS-OF-WAY,
EASEMENTS or other ENCUMBRANCES which would be
revealed by a current TITLE REPORT.

NOTE:
Multipurpose Non Fencing Easement:
Easements for the purposes of Roads, Utility,
Drainage, Cattle, Egress & Ingress, Horseback
Riding and Hiking.
AND ARE NOT TO BE FENCED OFF.



3049372
FILED AND RECORDED AT REQUEST OF
First American Title
June 17 2008
AT 11:17 O'Clock A.M.
BOOK 43 of Land Surveys
PAGE 33
Record of Yavapai County, Arizona



Anthony J. Benelli
Deputy Recorder



Shaw Surveying
P.O. Box 1123 - Snowflake, Az.
(520)-536-4023 June 8, 1998

S.W. Cor. Sec. 32(CC), Fnd. GLO BC. 1912.
AP-Set 2" Al. Cap 212.64
73537.7571
131804.9511
SW32 Calculated.

N.W. Cor. Sec. 5, Set 2" Al. Cap.

Fifth Standard Parallel North
See NOTE on SHEET 1.

N89°58'24"E 221.86
N88°58'24"E 615.43
AP-Set 2" Al. Cap 73634.1834
137099.5529

S.E. Cor. Sec. 32(CC), Fnd. GLO BC. 1912(CC).

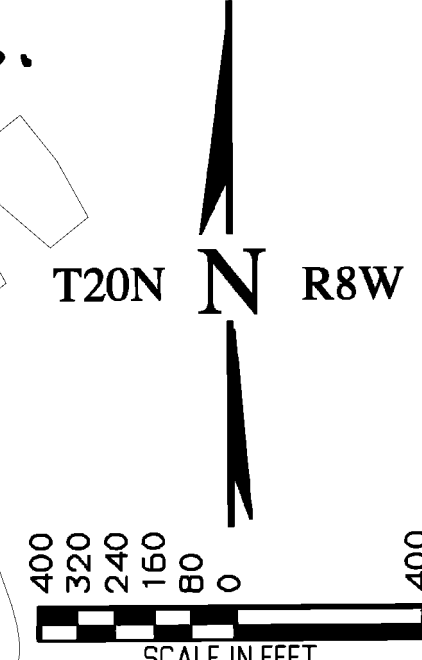
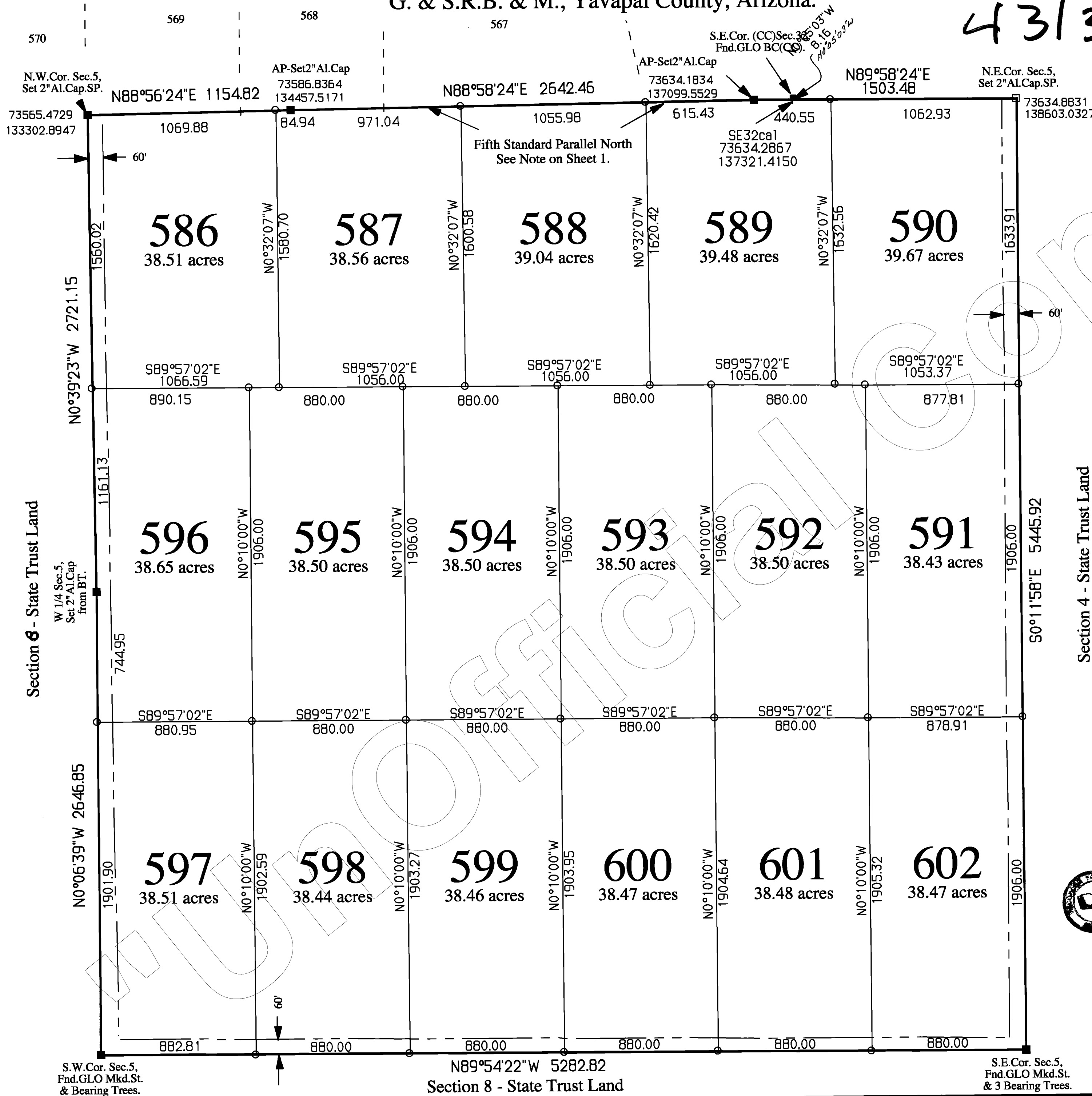
SE32cal
73634.2867
137321.4150

Sierra Verde Ranch - Unit XI

Section 5, T20N, R8W,
G. & S.R.B. & M., Yavapai County, Arizona.

Record of Survey
Sheet 5 of 6 Sheets

43/35 L.S.

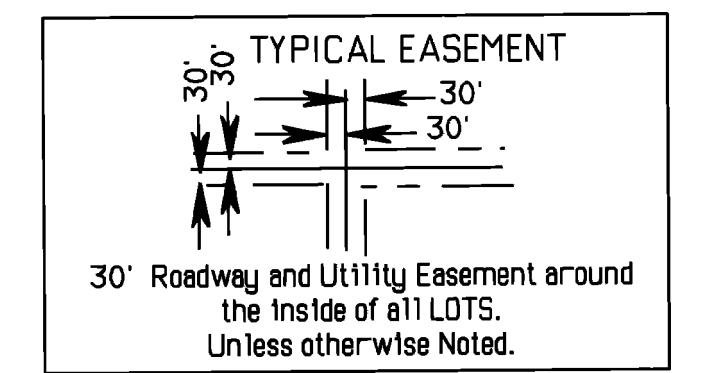


Basis of Bearing: North (WGS-84 Spheroid)
established using Trimble SSI Receivers in RTK.

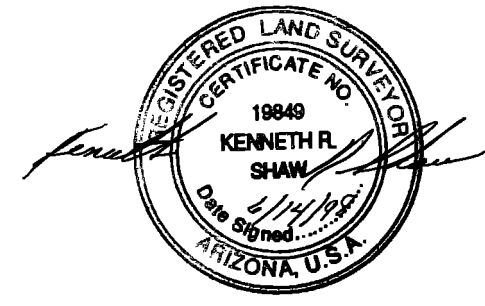
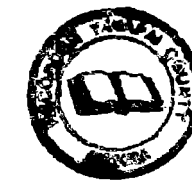
LEGEND	
---	Easement SEE NOTE
○	Set 2" Al. Cap LS 19849
■	Monument (see description)
X	Calculated Corner

NOTE:
This drawing does not reflect any RIGHTS-OF-WAY, EASEMENTS or other ENCUMBRANCES which would be revealed by a current TITLE REPORT.

NOTE:
Multipurpose Non Fencing Easement:
Easements for the purposes of Roads, Utility, Drainage, Cattle, Egress & Ingress, Horseback Riding and Hiking.
AND ARE NOT TO BE FENCED OFF.



3049372
FILED AND RECORDED AT REQUEST OF
First American Title
June 17 1998
AT 11:17 AM
BOOK 43 of Land Surveys
PAGE 35
Records of Yavapai County, Arizona
County Recorder
Anthony J. Senelli
Deputy Recorder



Shaw Surveying
P.O. Box 1123 - Snowflake, Az.
(520)-536-4023 June 8, 1998

Section 6 - State Trust Land

Section 4 - State Trust Land

Section 8 - State Trust Land

